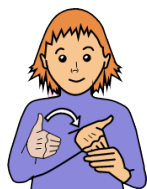




# Engaging D/deaf Audiences

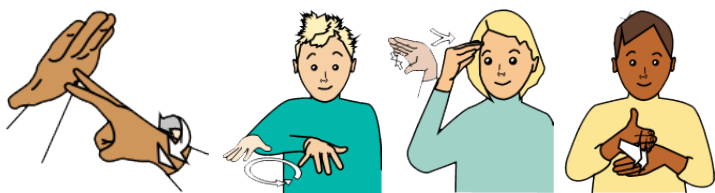
**A guide to developing learning activities  
for families of D/deaf children**



# Contents

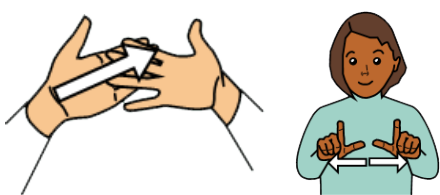
This resource aims to support positive creative engagement with families of D/deaf children. It provides useful information to help you develop and deliver learning activities, which are fun, interactive, accessible and inclusive for all the family to enjoy together.

<b>Planning family learning activities</b>	3
<b>Language and terminology</b>	3
<b>Communication tips</b>	4
<b>Resources</b>	5
<b>BSL interpreting services</b>	6
<b>Marketing</b>	7 – 8



# Planning family learning activities

- **Sensory family engagement** – plan visual, engaging and interactive activities that encourage families to work and create together, using tactile and sensory materials.
- **Playful games and interaction** – include puzzles and simple challenges that encourage communication and discussion between parents and children.
- **Creative feedback** – plan fun, participatory evaluation activities that provide you with helpful feedback from all the family.



## Language and terminology

- **Do's** – it is best practice to always use the term 'deaf' especially when referring to children. The NDCS use the term 'deaf' to refer to all level of deafness from mild to profound. Also most people who are D/deaf (or hard of hearing) prefer the term 'deaf' (or 'hard of hearing') because they consider them to be much more positive.
- **Avoid** – using the term 'hearing impaired' which implies a defect or that something is wrong with a D/deaf child or person. Many D/deaf families dislike this term as it does not reflect the richness, creativity and positivity of their language and culture.
- **Deaf with a capital D** – is any person or persons who identifies him/herself as a member of the Deaf community. Many Deaf people perceive their community akin to other language minority communities, and share a sense of Deaf Culture.
- **Everyone is an individual** – it is important to recognise that not all D/deaf children or young people perceive themselves as having a D/deaf identity, use sign language, or are part of the D/deaf community. They may use a range of terminology to describe themselves.
- **Makaton** – is a communication tool to support spoken language and understanding, in contrast to BSL, which is a full language with its own grammatical structure and rich vocabulary.



# Communication tips

- **Make sure you have the family's attention** – before you begin talking, have the parent's and child's full attention. Gentle tapping on the shoulder or hand waving might be needed to get attention/eye contact if the family aren't already looking.
- **Face each other and give eye contact** – face the parent/child or colleague you are speaking to and maintain eye contact, so they know you are talking to them and you can see their face clearly.
- **Make sure the room is well lit** – this helps the families understand what you are saying. Try not to stand in a position where you are in shadow or there is a bright light behind you.
- **Reduce background noise** – hearing aids and cochlear implants usually amplify all sound, so it is very difficult to hear speech clearly with noise in the background.
- **Be patient** – communication takes cognitive and emotional energy, it is important to take your time and repeat yourself if necessary.
- **Speak normally and do not shout** – keep a normal volume when talking as it can be uncomfortable for a hearing aid or cochlear implant wearer when you shout.
- **Speak one at a time** – make sure you wait your turn to speak. This helps the family understand better and answer your questions directly.
- **Use plain language** – that is easy to understand. Complicated or less frequently used words are often harder to lip read. All staff supporting the event should be able to explain the activity in straightforward language for D/deaf families and use written and visual instructions where possible.
- **Check the adult or child understands you** – make sure they are following what you are saying. Adjust your method of communication if necessary e.g. use signs, gestures or pointing.
- **Give more time to follow directions** – if you are pointing to resources, allow the child/family time to follow and then look back at you before you start speaking.
- **Write things down** – you can do this on paper, small white boards, on your phone, or using speech to text apps.



# Resources

## **British Deaf Association (BDA)** [bda.org.uk](http://bda.org.uk)

- BDA is a D/deaf-led charity and membership organisation that campaigns and advocates for D/deaf people who use British Sign Language.
- They deliver a range of services to help empower D/deaf people in everyday life.
- They have developed a BSL Charter to assist public agencies to provide better access to their services for D/deaf BSL communities.
- They have information and resources on the history and use of British Sign Language, BSL Fingerspelling, Communicating with D/deaf people and working with interpreters.

## **National Deaf Children's Society (NDCS)** [ndcs.org.uk](http://ndcs.org.uk)

- NDCS is a charity dedicated to creating a world without barriers to D/deaf children and their families.
- They offer a wide range of resources for families.

## **Royal Association for Deaf people (RAD)** [royaldeaf.org.uk](http://royaldeaf.org.uk)

- RAD is a charity that aims to promote the welfare and interests of D/deaf people and provides a range of services in their first or preferred language, usually British Sign Language (BSL).
- RAD also offers a BSL interpreter booking service [royaldeaf.org.uk/services-partners/communication-services/book-a-communication-professional/](http://royaldeaf.org.uk/services-partners/communication-services/book-a-communication-professional/)

## **Royal National Institute for the Deaf (RNID)** [rnid.org.uk/access-for-all](http://rnid.org.uk/access-for-all)

- RNID is a charity that aims to make life fully inclusive for D/deaf people or those with hearing loss or tinnitus.
- They offer a BSL Interpreter booking service for organisations.
- They offer services and training to organisations to support them to improve access for D/deaf people and those with hearing loss  
[rnid.org.uk/louderthanwords.org.uk](http://rnid.org.uk/louderthanwords.org.uk)

## **Signature**

[signature.org.uk/learning-support/](https://signature.org.uk/learning-support/)

- Signature is the main qualifications and assessment agency for British Sign Language (BSL).
- Their primary aim is to improve communication between D/deaf and hearing people and encourage more people to learn BSL. They can also signpost interested partners on where to go to learn BSL i.e. their nearest centre.
- They offer a full suite of resources for those who wish to learn BSL, many of which are free for anyone to download and use.

## **City Lit - Adult Education**

[citylit.ac.uk](https://citylit.ac.uk)

- City Lit offers an array of courses across a range of subject areas including vocational courses and qualifications in British Sign Language.
- The Centre for Deaf Education Courses at City Lit is an internationally renowned centre that provides support for D/deaf people. Their staff are a mixed group of D/deaf and hearing

professionals, who are all highly skilled in their own areas of specialist expertise.

## **deafPlus**

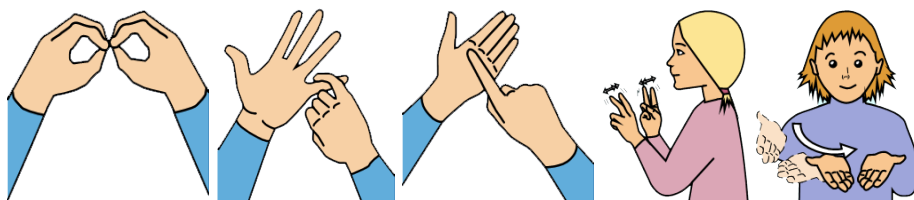
[deafplus.org](https://deafplus.org)

- deafPlus provide a wide range of services to their D/deaf clients to develop their potential and promote independence and wellbeing.
- They provide one to one, confidential information and D/deaf advice services nationwide.

## **Definitely Theatre**

[definitelytheatre.co.uk](https://definitelytheatre.co.uk)

- Definitely Theatre is the first D/deaf launched and D/deaf led professional theatre company in the UK, producing quality bilingual theatre in British Sign Language and spoken English.
- They aim to produce high-quality bilingual theatre for D/deaf and hearing audiences of all ages and backgrounds, combining the visual storytelling of British Sign Language with the immediacy of the spoken word.



# BSL interpreting services

- The NRCPD website (The National Register of Communication Professionals working with Deaf and Deafblind People) offers a [BSL interpreter booking service](#). You can type in your postcode and it will bring up a list of interpreters near you or willing to travel to you.
- Using the NRCPD register will mean paying the freelance interpreters directly without incurring surcharges or administration costs.
- Using agencies means you will have to pay additional costs as they will source an interpreter for you.

## Additional agencies

- Remark! Interpreting: provide professional British Sign Language Interpreters, Sign Supported English Interpreting, Lip Speakers, Note Takers, Palantypists, Deafblind Interpreting and Deaf Relay interpreting.



# Marketing

If you wish to promote your family learning activities and/or resources (websites, newsletters, networks + any printed material) for families of D/deaf children, you can publicise your events via these organisations:

## Schools for the D/deaf/Resource bases

### **Blanche Nevile School**

T +44 20 8347 3760

SMS +44 7840 288 192

primary@blanchenevile.org.uk

### **Culloden Primary Academy**

#### **Deaf Support Base**

T +44 20 7364 1010/ 0203 405 1107

info@cullodenacademy.org.uk

### **Frank Barnes School**

T +44 20 7391 7040

SMS +44 7070 626197

admin@fbarnes.camden.sch.uk

### **Hague Primary School Deaf Resource Base**

T +44 20 7739 9574

admin@hague.towerhamlets.sch.uk

### **Heathlands School**

T +44 1727 807807

SMS +44 7860 004370

admin@heathlands.herts.sch.uk

### **James Wolfe Primary School**

#### **Centre for Deaf Children**

T +44 20 8858 2472

admin@jameswolfe.greenwich.sch.uk

### **Jubilee Primary School Resource**

#### **Provision for Deaf Children**

T +44 20 7926 9061

Hladmin@lambeth.gov.uk

### **Laycock Primary School Deaf Provision**

T +44 20 7226 2927

office@laycock.islington.sch.uk

### **Lister Community School**

T +44 20 8471 3311

enquiries@lister.newham.sch.uk

### **Mary Hare Primary School**

T +44 1635 573 800

primary@maryhare.org.uk

### **Oak Lodge School**

T +44 20 8673 3453

info@oaklodge.wandsworth.sch.uk

### **Petchey Academy Deaf Support Base**

T +44 20 7275 1579

visit [petcheyacademy.org.uk](http://petcheyacademy.org.uk) for email enquiry form

### **Roding Primary School Deaf Provision**

T +44 20 8504 3706

admin@rodingprimary.co.uk

### **Selwyn Primary School Deaf Provision**

T +44 20 8471 6173

info.selwyn@leadinglearningtrust.org

### **Summerside Primary Academy**

#### **Provision for Deaf Children**

T +44 20 8445 1192

admin@summerside.barnet.sch.uk

### **Whitehall Primary School Deaf Provision**

T +44 20 8529 3813

office@whitehall.waltham.sch.uk



## Forums, networks and groups

- **Camden Family Learning Forum**  
Perin Sarosh, Programme Manager Family Learning, Perin.Sarosh@camden.gov.uk
- **Camden SENDCO Forum**  
Helen McNulty, Senior Advisor – SEND  
Helen.McNulty@camden.gov.uk
- **Camden SENDIASS service**  
Julie Bidgway, SENDIASS Manager,  
SENDIASS@camden.gov.uk
- **Camden Council**  
Phil McCorkell, Camden Communications  
Manager, Philip.McCorkell@camden.gov.uk
- **Camden Rehabilitation Officer for Deaf/  
Hard of Hearing People**  
Asif Iqbal, Asif.Iqbal@camden.gov.uk

## NDCS parent groups

The Connecting Families Team support local deaf children's societies across the UK, providing this useful map and detailed contact list:

- [Interactive map](#)

- [Contact list of individual support groups in your area](#)

## **BATOD (British Association of Teachers of the Deaf) website and regional groups**

Teresa Quail, Co-National Executive and Magazine Editor, exec@batod.org.uk

- batodsouth@batod.org.uk
- batodsouthwest@batod.org.uk
- batodeast@batod.org.uk

## **HOSS Forum (Heads of Schools & Services) and regional London group**

Lindsay Rousseau, Facilitator of NatSIP  
lindsey.rousseau@natsip.org.uk

We hope that you find this a useful resource, providing helpful information to run family learning activities for D/deaf children and their families in your organisation.

If you have any further questions or comments, please email [familylearning@bl.uk](mailto:familylearning@bl.uk) as we would welcome your feedback and ideas.

Created by the British Library, British Museum, Camden Family Learning and Frank Barnes School for Deaf Children.

Widgit Symbols © Widgit Software 2002-2022 | [widgit.com](http://widgit.com)

In partnership with:

The British  
Museum

